



### SOUTH HILL SEATTLE DATA CENTER PERFECT COLOCATION SAFEST AND MOST RELIABLE COLOCATION IN THE NORTHWEST

Every region in the US has some degree of natural hazard risk unique to its geography and climate. Colocation in the Pacific Northwest could put your organization's infrastructure at risk by hazards common to our region if you are not collocated in the safest data center in the Pacific Northwest. Unlike other regional data centers closer to hazard origins and in dense urban areas, our South Hill Seattle Data Center is the solution to mitigating these risks.

#### EARTHQUAKE RISK MITIGATION

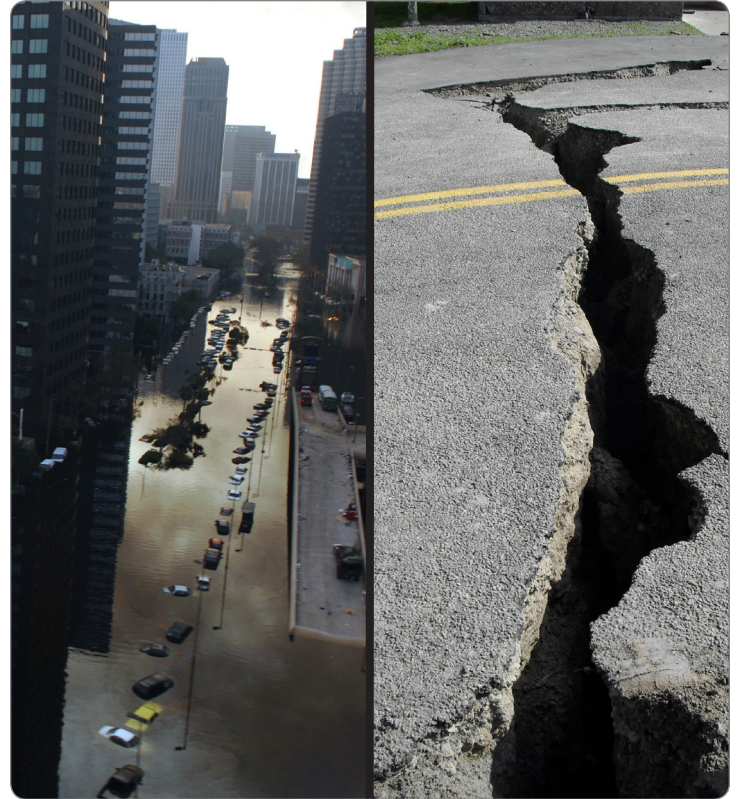
- ✓ Our South Hill Data Center sits on solid bedrock and is built to exceed Seismic Building Code Requirements by 25%.<sup>(1)</sup>
- ✓ Certified by a third-party geotechnical engineering firm, our South Hill facility is able to withstand a magnitude 9 subduction earthquake<sup>(1)</sup> with little to no structural impact.
- ✓ The nearest fault is located more than 20 miles from the South Hill campus,<sup>(1)</sup> and further clear of the Seattle Fault running through the Seattle metropolitan area.

#### VOLCANIC AND LAHAR HAZARD AVOIDANCE

- ✓ At 525 feet above sea level, South Hill Data Center is situated well above the 500-year flood plain.<sup>(2)</sup>
- ✓ Lahar risk is little to none, as South Hill Data Center sits topographically outside lahar event zones.<sup>(3)</sup>
- ✓ In the case of an area volcanic event, ash dispersion trends east 80% of the time due to standard wind patterns,<sup>(4)</sup> away from our South Hill campus but causing significant challenges to eastern area facilities.
- ✓ Tsunami hazard areas are many miles distant from a catastrophic event that could paralyze more urban, seaside areas.<sup>(3)</sup>

#### PHYSICAL AND OPERATIONAL SECURITY

- ✓ Our colocation and operational systems meet the national industry standards for PCI, SSAE 16 compliance.
- ✓ Audited by third-party certified organizations for financial, procedural, security, and availability compliance.
- ✓ Our South Hill 86 acre private campus has perimeter and building security fencing; 24/7/365 manned on-site security; card, biometric, and mantrap systems; CCTV digital camera coverage.



<sup>(1)</sup> GeoEngineers Geotechnical Report and Seismic Design Summary 2015

<sup>(2)</sup> FEMA Flood Hazard Mapping <http://fema.maps.arcgis.com>

<sup>(3)</sup> WA State Geologic Information Portal <https://geologyportal.dnr.wa.gov>

<sup>(4)</sup> U.S. Geological Survey [https://volcanoes.usgs.gov/volcanoes/mount\\_rainier/hazard\\_ash\\_tephra\\_fall.html](https://volcanoes.usgs.gov/volcanoes/mount_rainier/hazard_ash_tephra_fall.html)

Photo by Ministry of Civil Defense & Emergency Management / CC BY 4.0



**ENVIRONMENTAL HAZARDS ARE INHERENT IN ANY REGION, WORLDWIDE  
RISKS TO YOUR CRITICAL INFRASTRUCTURE ARE NEVER ACCEPTABLE  
OUR SOUTH HILL SEATTLE DATA CENTER IS YOUR SAFE AND SECURE SOLUTION**